

# RE-A // ROUND NON-TAPERED ALUMINUM

PEDESTRIAN METAL POLE



**King Luminaire**

## POLE SPECIFICATIONS

**MATERIAL:**

Round Non-Tapered Aluminum

**POLE HEIGHT:**

10' - 18'

**OPTIONS:**

GFI - Ground Fault Receptacle  
 BA - Banner Arms  
 FPH - Flower Pot Holder  
 FH - Flag Holder

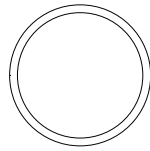
**ALLOY:**

6061-T6

**FINISH:**

Available in textured or smooth.

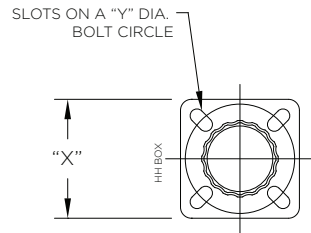
**CROSS SECTION:**



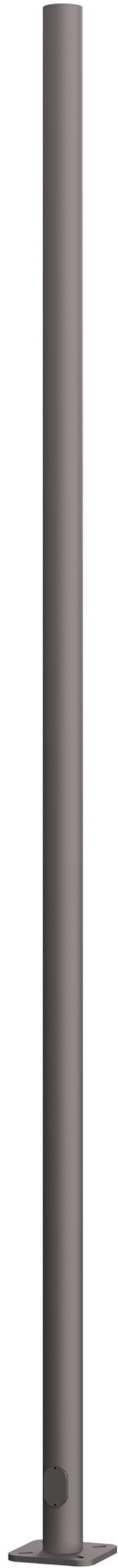
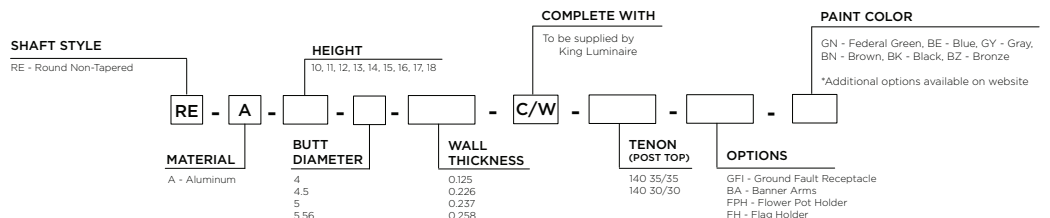
Round Non-Tapered (RE)

## BASEPLATE DETAILS

Pole		Baseplate		Bolt Circle		Anchor Bolts	
Butt Diameter (in)	Wall Thickness (in)	"X" Square (in)	Thickness (in)	"Y" Dia (in)	+/- (in)	Dia x Length x Hook (in)	Projection (in)
4	0.125	11.25	0.5	10	1	0.75 x 27 x 3.75	3
4	0.226	11.25	0.75	10	1	0.75 x 27 x 3.75	3.25
4.5	0.237	11.25	0.75	10	1	0.75 x 27 x 3.75	3.25
5	0.125	11.25	0.75	10	1	0.75 x 27 x 3.75	3.25
5.56	0.258	11.25	1	10	1	0.75 x 27 x 3.75	3.5



## HOW TO ORDER



# SHAFT DETAILS

# RE-A PEDESTRIAN METAL POLE

RE ALUMINUM // Pole Details

Nominal Mounting Height (ft)	Catalog Code	Alloy	Butt (in)	Tip (in)	Wall Thickness (in)	Handhole	Wt. (lbs) *
10	RE-A-10-4-0.125	6061-T6	4	4	0.125	2" x 4" (MIN 9" AG)	25
	RE-A-10-4-0.226	6061-T6	4	4	0.226	2" x 4" (MIN 9" AG)	42
	RE-A-10-4.5-0.237	6061-T6	4.5	4.5	0.237	2-1/2" x 5" (MIN 9" AG)	48
11	RE-A-11-4-0.125	6061-T6	4	4	0.125	2" x 4" (MIN 9" AG)	27
	RE-A-11-4-0.226	6061-T6	4	4	0.226	2" x 4" (MIN 9" AG)	45
	RE-A-11-4.5-0.237	6061-T6	4.5	4.5	0.237	2-1/2" x 5" (MIN 9" AG)	52
12	RE-A-12-4-0.125	6061-T6	4	4	0.125	2" x 4" (MIN 9" AG)	29
	RE-A-12-4-0.226	6061-T6	4	4	0.226	2" x 4" (MIN 9" AG)	49
	RE-A-12-4.5-0.237	6061-T6	4.5	4.5	0.237	2-1/2" x 5" (MIN 9" AG)	56
13	RE-A-13-4-0.226	6061-T6	4	4	0.226	2" x 4" (MIN 9" AG)	52
	RE-A-13-4.5-0.237	6061-T6	4.5	4.5	0.237	2-1/2" x 5" (MIN 9" AG)	60
	RE-A-13-5-0.125	6061-T6	5	5	0.125	3" x 5" Reinforced (MIN 9" AG)	40
14	RE-A-14-4-0.226	6061-T6	4	4	0.226	2" x 4" (MIN 9" AG)	55
	RE-A-14-4.5-0.237	6061-T6	4.5	4.5	0.237	2-1/2" x 5" (MIN 9" AG)	63
	RE-A-14-5-0.125	6061-T6	5	5	0.125	3" x 5" Reinforced (MIN 9" AG)	42
15	RE-A-15-4-0.226	6061-T6	4	4	0.226	2" x 4" (MIN 9" AG)	58
	RE-A-15-4.5-0.237	6061-T6	4.5	4.5	0.237	2-1/2" x 5" (MIN 9" AG)	67
	RE-A-15-5-0.125	6061-T6	5	5	0.125	3" x 5" Reinforced (MIN 9" AG)	44
16	RE-A-16-4-0.226	6061-T6	4	4	0.226	2" x 4" (MIN 9" AG)	61
	RE-A-16-4.5-0.237	6061-T6	4.5	4.5	0.237	2-1/2" x 5" (MIN 9" AG)	71
	RE-A-16-5-0.125	6061-T6	5	5	0.125	3" x 5" Reinforced (MIN 9" AG)	47
	RE-A-16-5.56-0.258	6061-T6	5.56	5.56	0.258	3" x 5" Reinforced (MIN 9" AG)	96
17	RE-A-17-4.5-0.237	6061-T6	4.5	4.5	0.237	2-1/2" x 5" (MIN 9" AG)	75
	RE-A-17-5-0.125	6061-T6	5	5	0.125	3" x 5" Reinforced (MIN 9" AG)	49
	RE-A-17-5.56-0.258	6061-T6	5.56	5.56	0.258	3" x 5" Reinforced (MIN 9" AG)	101
18	RE-A-18-4.5-0.237	6061-T6	4.5	4.5	0.237	2-1/2" x 5" (MIN 9" AG)	79
	RE-A-18-5-0.125	6061-T6	5	5	0.125	3" x 5" Reinforced (MIN 9" AG)	51
	RE-A-18-5.56-0.258	6061-T6	5.56	5.56	0.258	3" x 5" Reinforced (MIN 9" AG)	106

\* Weight includes the pole shaft and baseplate.

# SHAFT LOADING

RE ALUMINUM // Loading

Nominal Mounting Height (ft)	Catalog Code	Design Information // AASHTO LTS-6, Latest Revision **									
		90 MPH		100 MPH		110 MPH		120 MPH		150 MPH	
		Max EPA (sq ft)	Max Load (lbs)	Max EPA (sq ft)	Max Load (lbs)	Max EPA (sq ft)	Max Load (lbs)	Max EPA (sq ft)	Max Load (lbs)	Max EPA (sq ft)	Max Load (lbs)
10	RE-A-10-4-0.125	4.7	200	3.4	200	2.5	200	1.9	200	1.0	200
	RE-A-10-4-0.226	9.0	200	7.0	200	5.5	200	4.4	200	2.6	200
	RE-A-10-4.5-0.237	11.4	300	9.0	200	7.2	200	6.0	200	3.6	200
11	RE-A-11-4-0.125	3.8	200	2.7	200	1.9	200	1.4	200	0.6	200
	RE-A-11-4-0.226	7.7	200	5.9	200	4.5	200	3.6	200	2.1	200
	RE-A-11-4.5-0.237	10.0	300	7.7	200	6.1	200	5.0	200	3.0	200
12	RE-A-12-4-0.125	3.1	200	2.1	200	1.3	200	0.9	200	-	-
	RE-A-12-4-0.226	6.6	200	5.0	200	3.7	200	2.9	200	1.6	200
	RE-A-12-4.5-0.237	8.7	200	6.6	200	5.2	200	4.2	200	2.5	200
13	RE-A-13-4-0.226	5.7	200	4.2	200	3.0	200	2.3	200	1.2	200
	RE-A-13-4.5-0.237	7.5	200	5.6	200	4.4	200	3.5	200	2.0	200
	RE-A-13-5-0.125	9.3	200	7.2	200	5.8	200	4.8	200	2.8	200

## RE-A PEDESTRIAN METAL POLE

RE ALUMINUM // Loading	Nominal Mounting Height (ft)	Catalog Code	Design Information // AASHTO LTS-6, Latest Revision **									
			90 MPH		100 MPH		110 MPH		120 MPH		150 MPH	
			Max EPA (sq ft)	Max Load (lbs)	Max EPA (sq ft)	Max Load (lbs)	Max EPA (sq ft)	Max Load (lbs)	Max EPA (sq ft)	Max Load (lbs)	Max EPA (sq ft)	Max Load (lbs)
14	RE-A-14-4-0.226	4.8	200	3.4	200	2.4	200	1.7	200	0.8	200	
	RE-A-14-4.5-0.237	6.5	200	4.7	200	3.6	200	2.9	200	1.6	200	
	RE-A-14-5-0.125	8.1	200	6.2	200	5.0	200	4.1	200	2.3	200	
15	RE-A-15-4-0.226	4.1	200	2.8	200	1.9	200	1.2	200	0.5	200	
	RE-A-15-4.5-0.237	5.6	200	4.0	200	3.0	200	2.3	200	1.2	200	
	RE-A-15-5-0.125	7.0	200	5.3	200	4.2	200	3.4	200	1.9	200	
16	RE-A-16-4-0.226	3.4	200	2.2	200	1.3	200	0.8	200	-	-	
	RE-A-16-4.5-0.237	4.8	200	3.3	200	2.4	200	1.8	200	0.9	200	
	RE-A-16-5-0.125	6.1	200	4.5	200	3.5	200	2.8	200	1.5	200	
	RE-A-16-5.56-0.258	13.5	300	10.7	300	8.7	200	7.2	200	4.3	200	
17	RE-A-17-4.5-0.237	4.0	200	2.6	200	1.8	200	1.3	200	0.5	200	
	RE-A-17-5-0.125	5.1	200	3.7	200	2.9	200	2.2	200	1.1	200	
	RE-A-17-5.56-0.258	12.0	300	9.6	200	7.7	200	6.3	200	3.7	200	
18	RE-A-18-4.5-0.237	3.3	200	2.0	200	1.3	200	0.9	200	-	-	
	RE-A-18-5-0.125	4.2	200	3.0	200	2.3	200	1.7	200	0.8	200	
	RE-A-18-5.56-0.258	10.7	300	8.5	200	6.8	200	5.5	200	3.2	200	

\*\* EPA represents the Effective Projected Area of the attachments on the pole. Designs are limited to post top luminaires or attachments located at or below the mounting height. Consult factory for poles supporting attachments located above the mounting height.

## BASE COMPATIBILITY

Pole Butt Size	Split Bases							
	KSB10	KSB52	KSB16	KSB19	KSB70	KSB77	KSB76	KSB20
4								
4.5								
5								
5.56								

05-17-2022